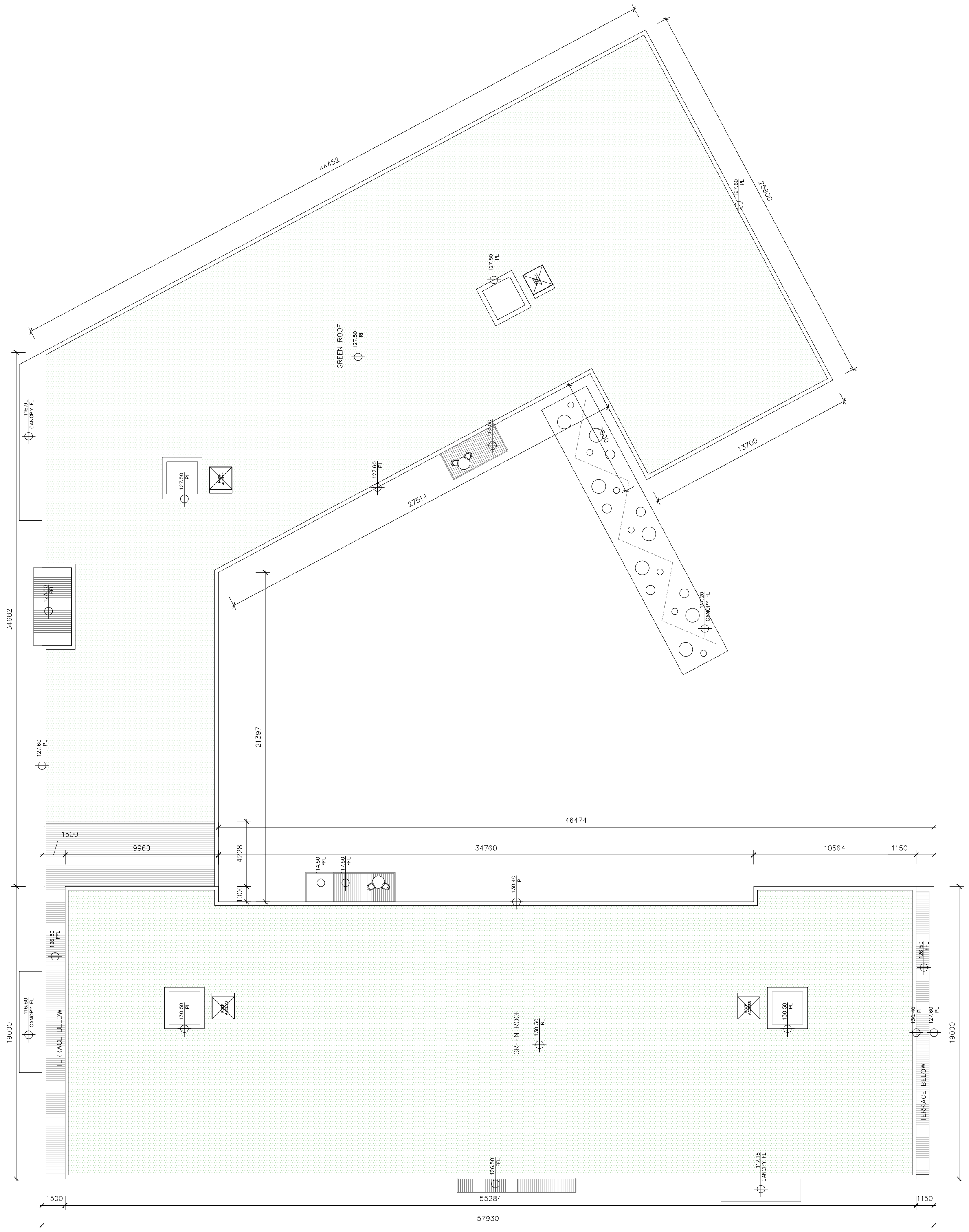




01 Proposed Fourth Floor Plan  
E-PA-103 1:200



02 Proposed Roof Plan  
E-PA-103 1:200

ISSUED FOR PLANNING ONLY, NOT FOR CONSTRUCTION

NOTES:

Do not scale from this drawing.

Any discrepancies found on site to be reported to Darmody Architects immediately.

Any discrepancies found on drawings to be reported to Darmody Architects immediately.

Refer to engineers drawings for structural details.

All dimensions sized to blockwork.

**NOTE:** ALL DRAWINGS TO BE READ IN CONJUNCTION WITH DBFL CONSULTING ENGINEERS, CUNNANE STRATTON REYNOLDS LANDSCAPE ARCHITECTS & THE MECHANICAL & ELECTRICAL CONSULTING ENGINEERS DRAWINGS & SPECIFICATIONS.

Rev.	Description.	Date.	Initials.
A	Minor modifications in response to Daylight / Sunlight analysis	23/09/19	A.B.

XREF'S  
CAD REF.

DRAWING KEY

SCALE BAR

DRAWING KEY

NORTH POINT

**creative innovative flexible**

**darmody**  
architecture

91 Townsend Street, Dublin 2  
353 1 672 9907  
info@darmodyarchitecture.com  
darmodyarchitecture.com

Rev. No.	Scale	Date	Dm. By	Chkd. By	Issue
A	1:200 @ A1	16/03/2018	Adam Brzostek	Tim Darmody	PLANNING

Project.

Strategic Housing Development,  
Fortunestown Lane, Saggart, Co.Dublin.

Title.

BLOCK E  
PROPOSED FOURTH FLOOR & ROOF PLAN

Client.

Greenacres Residential DAC

Dwg. No.

E-PA-103

Job No.

1518-1





ISSUED FOR PLANNING ONLY, NOT FOR CONSTRUCTION

NOTES:

Do not scale from this drawing.

Any discrepancies found on site to be reported to Darmody Architects immediately.

Any discrepancies found on drawings to be reported to Darmody Architects immediately.

Refer to engineers drawings for structural details.

All dimensions sized to blockwork.

**NOTE:** ALL DRAWINGS TO BE READ IN CONJUNCTION WITH DBFL CONSULTING ENGINEERS, CUNNANE STRATTON REYNOLDS LANDSCAPE ARCHITECTS & THE MECHANICAL & ELECTRICAL CONSULTING ENGINEERS DRAWINGS & SPECIFICATIONS.

Rev.	Description.	Date.	Initials.
A	Minor modifications in response to Daylight / Sunlight analysis	23/09/19	A.B.

XREF'S  
CAD REF.

DRAWING KEY

SCALE BAR

0 05 10m

DRAWING KEY

NORTH POINT

creative innovative flexible

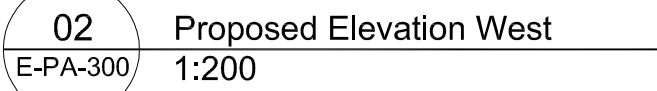
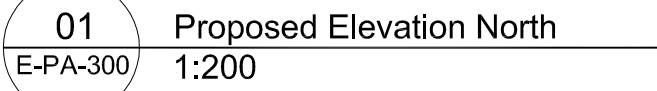
**darmody**  
architecture

91 Townsend Street, Dublin 2  
353 1 672 9907  
info@darmodyarchitecture.com  
darmodyarchitecture.com

Rev. No.	Scale	Date	Dm. By	Chkd. By	Issue
A	1:200 @ A1	12/03/2018	Adam Brzostek	Tim Darmody	PLANNING

Project.	Strategic Housing Development, Fortunestown Lane, Saggart, Co.Dublin.
Title.	BLOCK E PROPOSED SECTIONS
Client.	Greenacres Residential DAC
Dwg. No.	E-PA-200
Job No.	1518-1





**NOTES:**

Do not scale from this drawing.

Any discrepancies found on site to be reported to Darmody Architects immediately.

Any discrepancies found on drawings to be reported to Darmody Architects immediately.


Refer to engineers drawings for structural details.

**All dimensions sized to blockwork.**


**NOTE:** ALL DRAWINGS TO BE READ IN CONJUNCTION WITH DBFL CONSULTING ENGINEERS, CUNNANE STRATTON REYNOLDS LANDSCAPE ARCHITECTS & THE MECHANICAL & ELECTRICAL CONSULTING ENGINEERS DRAWINGS & SPECIFICATIONS.

Rev.	Description.	Date.	Initials.
A	Minor modifications in response to Daylight / Sunlight analysis	23/09/19	A.B.
XREF'S CAD REF.			

<p><b>DRAWING KEY</b></p>	<p><b>SCALE BAR</b></p>	<p><b>DRAWING KEY</b></p>	<p><b>NORTH POINT</b></p>



creative innovative flexible

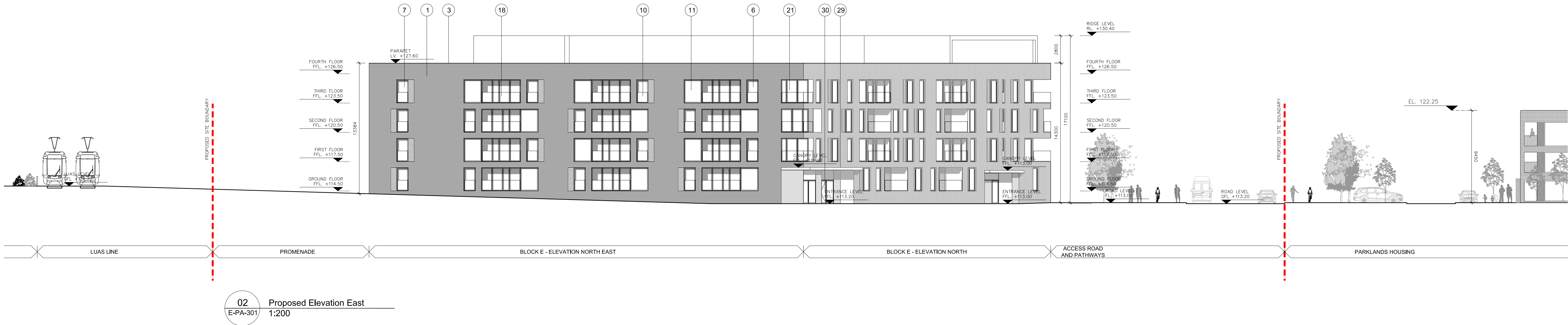
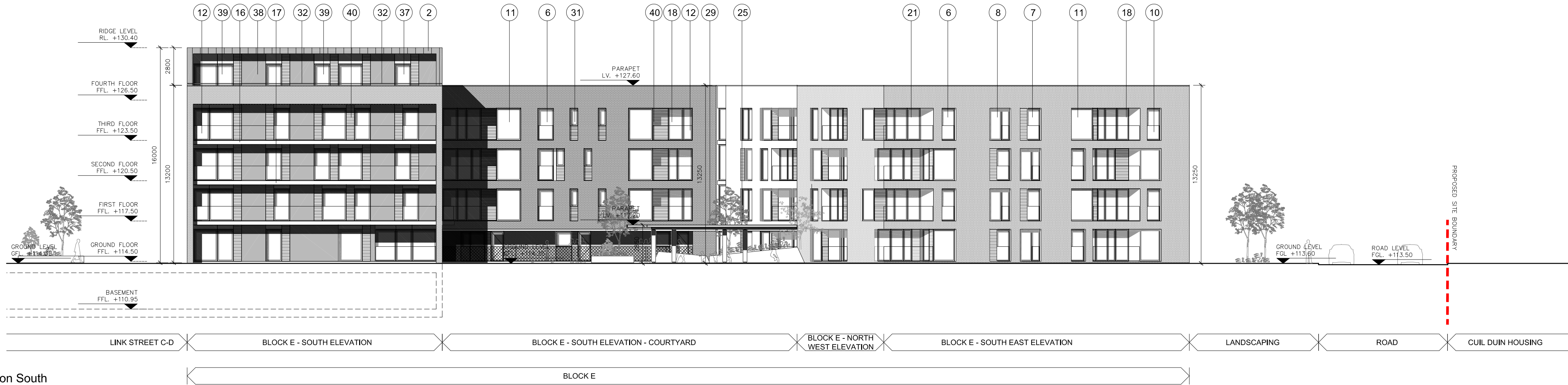


91 Townsend Street, Dublin 2  
353 1 672 9907  
info@darmodyarchitecture.com  
darmodyarchitecture.com

Rev. No.	Scale	Date	Drm. By	Chkd. By	Issue
A	1:200 @ A1	12/03/2018	Adam Brzostek	Tim Darmody	PLANNING

Project.	Strategic Housing Development, Fortunestown Lane, Saggart, Co.Dublin.		
Title.	BLOCK E PROPOSED ELEVATIONS		
Client.	Greenacres Residential DAC		
Dwg. No.	E-PA-300	Job No.	1518-1





ISSUED FOR PLANNING ONLY, NOT FOR CONSTRUCTION

NOTES:

Do not scale from this drawing.

Any discrepancies found on site to be reported to Darmody Architects immediately.

Any discrepancies found on drawings to be reported to Darmody Architects immediately.

Refer to engineers drawings for structural details.

All dimensions sized to blockwork.

**NOTE:** ALL DRAWINGS TO BE READ IN CONJUNCTION WITH DBFL CONSULTING ENGINEERS, CUNNANE STRATTON REYNOLDS LANDSCAPE ARCHITECTS & THE MECHANICAL & ELECTRICAL CONSULTING ENGINEERS DRAWINGS & SPECIFICATIONS.

Rev.	Description.	Date.	Initials.
A	Minor modifications in response to Daylight / Sunlight analysis	23/09/19	A.B.

XREF'S  
CAD REF.

**DRAWING KEY**

**SCALE BAR**

0 05 10m

**DRAWING KEY**

**NORTH POINT**

creative innovative flexible

**darmody**  
architecture

91 Townsend Street, Dublin 2  
353 1 672 9907  
info@darmodyarchitecture.com  
darmodyarchitecture.com

Rev. No.	Scale	Date	Dm. By	Chkd. By	Issue
A	1:200 @ A1	05/12/2018	Adam Brzostek	Tim Darmody	PLANNING

Project.	Strategic Housing Development, Fortunestown Lane, Saggart, Co.Dublin.
Title.	BLOCK E PROPOSED ELEVATIONS
Client.	Greenacres Residential DAC
Dwg. No.	E-PA-301
Job No.	1518-1



## PA - General External Materials list:


(refer to Dramody Architecture PA drawings)

- 01 Selected Brick to architect's detail & specification
- 02 Selected Standing Seam Metal Cladding
- 03 Pressed Aluminium Capping to parapets to selected color
- 04 Selected Double Glazed Windows to Penthouse
- 05 Selected Double Glazed Windows  
with Openable Section to Penthouse
- 06 Selected Double Glazed Windows
- 07 Selected Double Glazed Windows with Aluminium Panel
- 08 Selected Double Glazed Windows with Openable Section
- 09 Selected Double Glazed Windows with Openable Section and  
Aluminium Panel
- 10 Frameless glass balustrade to window
- 11 Selected Corner Window & Doorsets to recessed balconies
- 12 Frameless glass balustrade/ guarding to balconies
- 13 Powdercoated Aluminium Curtain Wall Glazing to staircores
- 14 Powdercoated Aluminium Curtain Wall Glazing to corridors
- 15 Selected Colour Powdercoated Pressed Aluminium Edge to Balcony  
with Frameless Safety Glass Balustrade and Decking Finish
- 16 Selected Colour Powdercoated Pressed Aluminium Edge to Balcony  
with Frameless Safety Glass Balustrade, Timber Finish  
and Selected Cladding Soffit above
- 17 Selected Colour Powdercoated Pressed Aluminium Edge to Balcony  
with Frameless Safety Glass Balustrade, Decking Finish and Selected  
Cladding Soffit above

18	Selected Colour Powdercoated Pressed Aluminium Edge to Recessed Balcony with Frameless Safety Glass Balustrade, Decking Finish and Selected Cladding Soffit above
19	Selected Colour Powdercoated Pressed Aluminium Edge to Recessed Balcony with Frameless Safety Glass Balustrade, Decking Finish and Selected Cladding Soffit above
20	Recessed Balcony with Brick Balustrade, Concrete Paver Finish and Selected Cladding Soffit above
21	Selected Colour Powdercoated Pressed Aluminium Edge to Recessed Corner Balcony with Frameless Safety Glass Balustrade, Decking Finish and Selected Cladding Soffit above
22	Selected Colour Powdercoated Pressed Aluminium Edge to Recessed Corner Balcony with Frameless Safety Glass Balustrade, Decking Finish and Selected Cladding Soffit above
23	Recessed Penthouse Terrace with Brick Parapet, Decking Finish and Selected Cladding Soffit above
24	Prefabricated Mild Steel Channel Powdercoated to selected RAL colour.
25	Selected Colour Powdercoated Columns
26	Selected Double Glazed Door
27	Selected Double Glazed Windows and Doors
28	Selected Aluminium Edge of Canopy with Selected Cladding Soffit to apartment block courtyard
29	Selected Aluminium Edge of Canopy with Selected Cladding Soffit to Apartments Block Entrance
30	Selected AluClad Apartments Block Entrance Door with Double Glazed Windows and Aluminium Fixed Panels

31	Selected Double Glazed Windows with Aluminium Panel
32	Powdercoated Metal Handrail to Penthouse Terrace to Architect's Detail
33	Powdercoated Mild Steel Gate to undercroft parking with Hardwood Timber Infill Panels
34	Powdercoated Aluminium Curtain Wall Glazing to retail units with Solid Aluminium Panels for Signage
35	Selected Colour Powdercoated Aluminium Curtain Wall Glazing to retail units
36	Fully Glazed Aluminium Framed Wintergarden with Opening Sections
37	Selected Double Glazed Windows to Penthouse Terrace
38	Selected Fiber Cement Cladding
39	Selected Double Glazed Doorsets to Penthouse Terrace
40	Selected Aluminium Fixed Panel
41	Selected Colour Powdercoated Mild Steel Louvers Vents to Undercroft Car Parking
42	Hard & Soft Landscaping in Front of Undercroft Car Parking as per Landscape Architects Layout - Refer to CSR Drawings & Specifications or Details
43	Selected Double Glazed Windows to Creche Garden
44	Selected Double Glazed Doors to Creche Garden
45	Selected Aluminium Fixed Panel

ISSUED FOR PLANNING ONLY, NOT FOR CONSTRUCTION

<div>NOTES:</div> <div>Do not scale from this drawing.</div> <div>Any discrepancies found on site to be reported to Darmody Architects immediately.</div> <div>Any discrepancies found on drawings to be reported to Darmody Architects immediately.</div> <div>Refer to engineers drawings for structural details.</div> <div>All dimensions sized to blockwork.</div>							<div><div><div><div>■ creative innovative flexible</div><div></div></div><div><div>darmodyarchitecture</div><div>91 Townsend Street, Dublin 2 353 1 672 9907 info@darmodyarchitecture.com darmodyarchitecture.com</div></div></div></div> <div><table><tr><th>Rev. No.</th><th>Scale</th><th>Date</th><th>Drn. By</th><th>Chkd. By</th><th>Issue</th></tr><tr><td>A</td><td>NTS @ A3</td><td>27/11/2018</td><td>Adam Brzostek</td><td>Tlm Darmody</td><td>PLANNING</td></tr></table></div>						Rev. No.	Scale	Date	Drn. By	Chkd. By	Issue	A	NTS @ A3	27/11/2018	Adam Brzostek	Tlm Darmody	PLANNING	Project. <div>Strategic Housing Development, Fortunestown Lane,Saggart, Co.Dublin.</div>		Title. <div>Systems, Materials &amp; Codes</div>		Client. <div>Greenacre Residential DAC</div>		Dwg. No. <div>PA-500</div>		Job No. <div>1518-1</div>	
	Rev. No.	Scale	Date	Drn. By	Chkd. By	Issue																												
	A	NTS @ A3	27/11/2018	Adam Brzostek	Tlm Darmody	PLANNING																												
	Rev.	Description.	Date.	Initials.	DRAWING KEY		NORTH POINT																											
	A	Additional Material codes added	23/09/19	A.B.																														
XREF'S CAD REF.																																		



**Darmody Architecture**

91 Townsend Street  
Dublin 2  
Ireland

353 1 672 9907  
info@darmodyarchitecture.com  
darmodyarchitecture.com

**Other specialised services include**

**BER Assessments** (commercial and domestic)  
**Conservation Consultancy**  
**Project Management**  
**Health & Safety** (Project Supervisor Design Process PSDP)  
**Fire Certificate Applications**  
**Project Appraisal**  
**Sustainability**  
**Expert Witness**

Darmody Architecture is a member of the  
Royal Institute of the Architects of Ireland,  
the Royal Institute of British Architects and  
the Docklands Business Forum.

